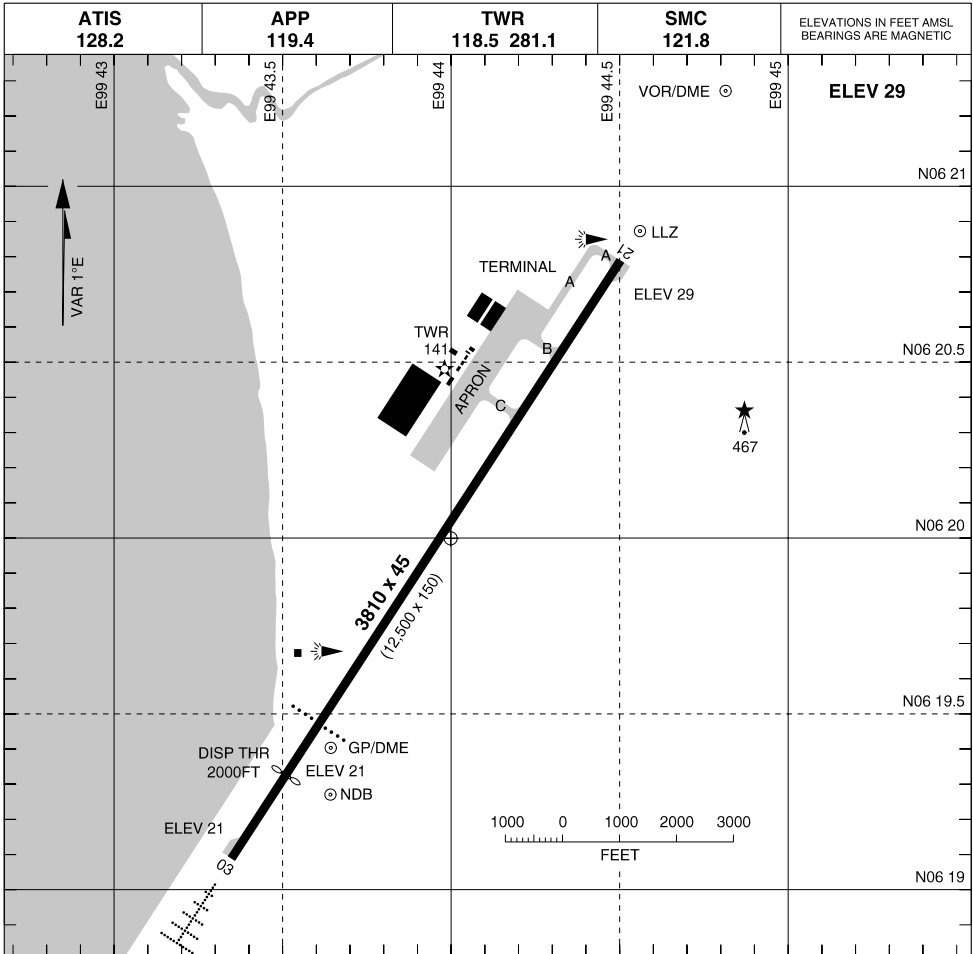


AERODROME CHART

LANGKAWI (WMKL)

Langkawi INTL

MALAYSIA



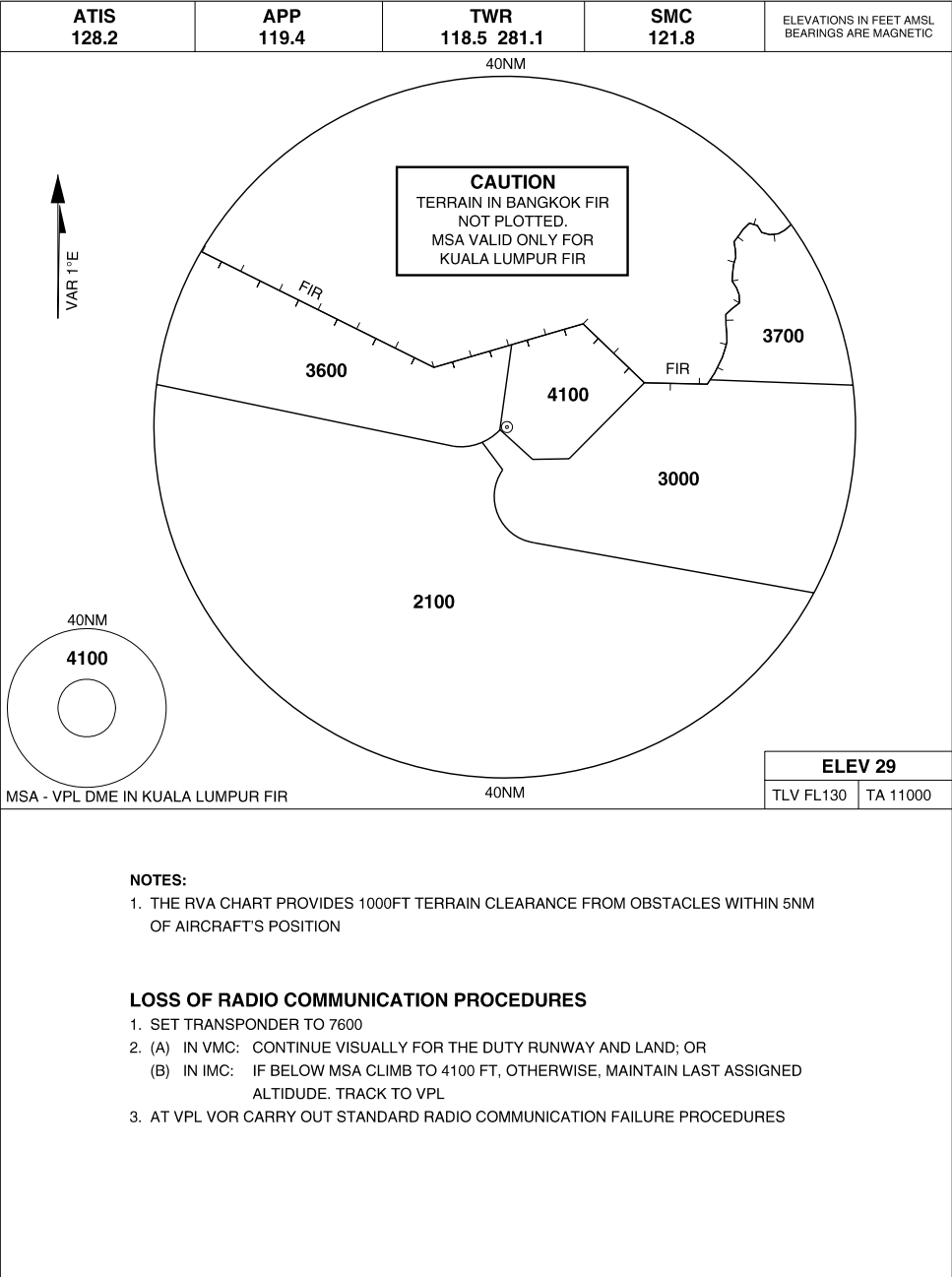
LIGHTING				NOTES
RWY	APPROACH	THR	RUNWAY	
03 (034°)	HIAL CAT 1 - 5 BAR PAPI 3.00°	RED GREEN	WHITE / AMBER REDL RED/GREEN RENL	
21 (214°)	NIL	RED	WHITE / AMBER REDL RED RENL	
ABN: FLG ALT G W WDI: ILLUMINATED TWY: CENTRELINE GREEN AND SIDELINE BLUE OBSTRUCTION: MEDIUM DENSITY RED TURNING PAD: BLUE FLOOD LIGHTS				1. RWY 03 LEFT CIRCUIT RWY 21 RIGHT CIRCUIT 2. CIRCUIT HEIGHT HEAVY/MED ACFT - 1500FT CIRCUIT HEIGHT LIGHT ACFT - 1000FT CIRCUIT HEIGHT ULTRALIGHT - 800FT CIRCUIT HEIGHT LOW LEVEL - 500FT 3. THR RWY 03 DISP 2000FT 4. COCONUT TREES INFRINGE APCH SFC RWY 21 5. CAUTION: BIRD HAZARD 6. CAUTION: KITE FLYING IN VICINITY OF AD

RADAR VECTORING
AREA CHART

LANGKAWI (WMKL)
Langkawi INTL

AIP-04JUN09-NOTAM

MALAYSIA



CHANGES: MSA

RADAR VECTORING
AREA CHART

N06 20.00 E099 44.00

MALAYSIA

LANGKAWI (WMKL)
Langkawi INTL

02 MAY 13

MALAYSIA

AIP-04JUN09-NOTAM

- TRACK 211° TO 1000FT OR 6 DME VPL THEN TRACK TO LANEX
- FROM LANEX TRACK R-214 FOR REBAX
- AT REBAX TURN LEFT TRACK 113°
- INTERCEPT VPL R-143 (W531) AT OR BEFORE VILAT.

02 MAY 13

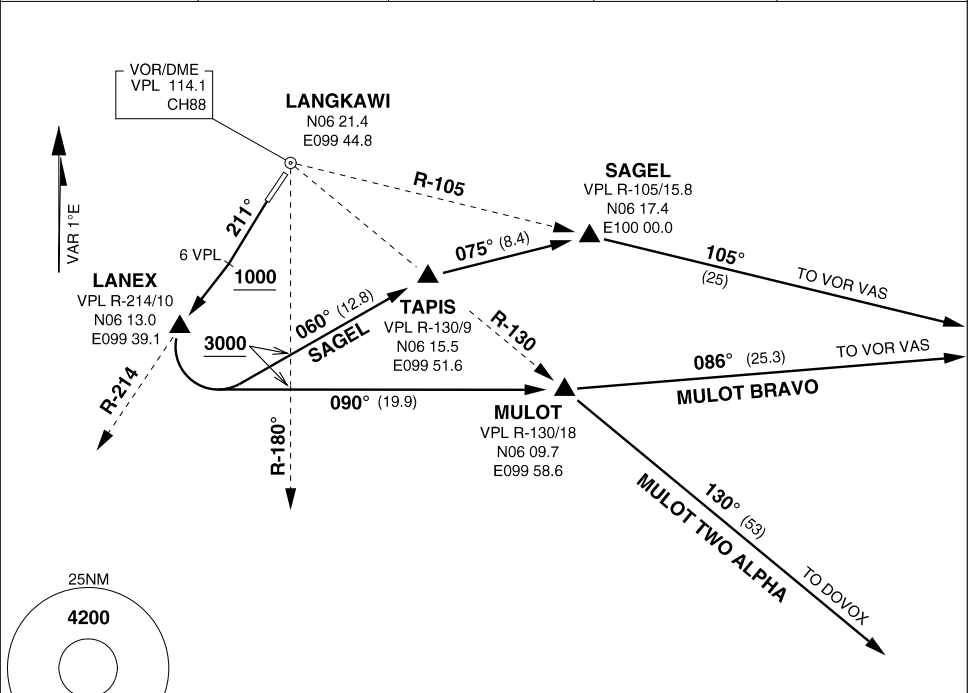
SID
RWY 21 EAST

LANGKAWI (WMKL)
Langkawi INTL

AIP-04JUN09-NOTAM

MALAYSIA

ATIS 128.2	APP 119.4	TWR 118.5 281.1	SMC 121.8	ELEVATIONS IN FEET AMSL BEARINGS ARE MAGNETIC
---------------	--------------	--------------------	--------------	--------------------------------------------------



- INITIAL TRACK 211° TO 1000FT OR 6 DME VPL, THEN TRACK TO LANEX.

MULOT TWO ALPHA DEPARTURE

- AT LANEX TURN LEFT TRACK 090° FOR MULOT.
- CROSS VPL R-180 AT 3000FT OR ABOVE.
- INTERCEPT VPL R-130 AT OR BEFORE MULOT.
- TRACK VIA VPL R-130 TO INTERCEPT ATS ROUTE R325 AT DOVOX.

MULOT BRAVO DEPARTURE

- AT LANEX TURN LEFT TRACK 090° TO MULOT.
- CROSS VPL R-180 AT 3000FT OR ABOVE.
- FROM MULOT TRACK 086°/VAS R-266 TO VAS VOR.
- THENCE TRACK VIA ATC CLEARED ROUTE.

SAGEL DEPARTURE (ALTERNATIVE RTE TO VAS VOR)

- AT LANEX TURN LEFT TRACK 060° TO TAPIS.
- CROSS VPL R-180 AT 3000FT OR ABOVE .
- FROM TAPIS TRACK 075° TO SAGEL.
- AT SAGEL TRACK 105°/ VAS R-284 TO VAS VOR.
- THENCE TRACK VIA ATC CLEARED ROUTE.

CHANGES: MSA

SID
RWY 21 EAST

N06 20.00 E099 44.00

MALAYSIA

LANGKAWI (WMKL)
Langkawi INTL

02 MAY 13

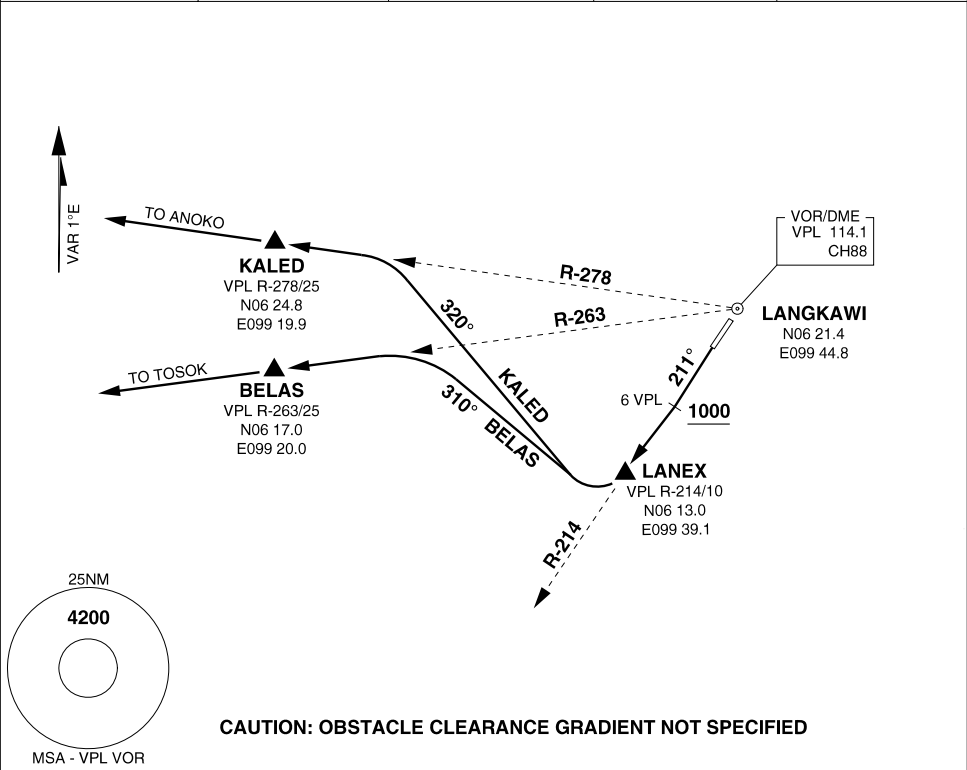
SID
RWY 21 WEST

LANGKAWI (WMKL)
Langkawi INTL

AIP-04JUN09-NOTAM

MALAYSIA

ATIS 128.2	APP 119.4	TWR 118.5 281.1	SMC 121.8	ELEVATIONS IN FEET AMSL BEARINGS ARE MAGNETIC
---------------	--------------	--------------------	--------------	--------------------------------------------------



- INITIAL TRACK 211° TO 1000FT OR 6 DME VPL, THEN TRACK TO LANEX.

BELAS DEPARTURE

- TURN RIGHT AT LANEX TRACK 310°.
- INTERCEPT VPL R-263 TO BELAS.
- TRACK VIA ATC CLEARED ROUTE.

KALED DEPARTURE

- TURN RIGHT AT LANEX TRACK 320°.
- INTERCEPT VPL R-278 TO KALED.
- TRACK VIA ATC CLEARED ROUTE.

CHANGES: MSA

SID
RWY 21 WEST

N06 20.00 E099 44.00

MALAYSIA

LANGKAWI (WMKL)
Langkawi INTL

02 MAY 13

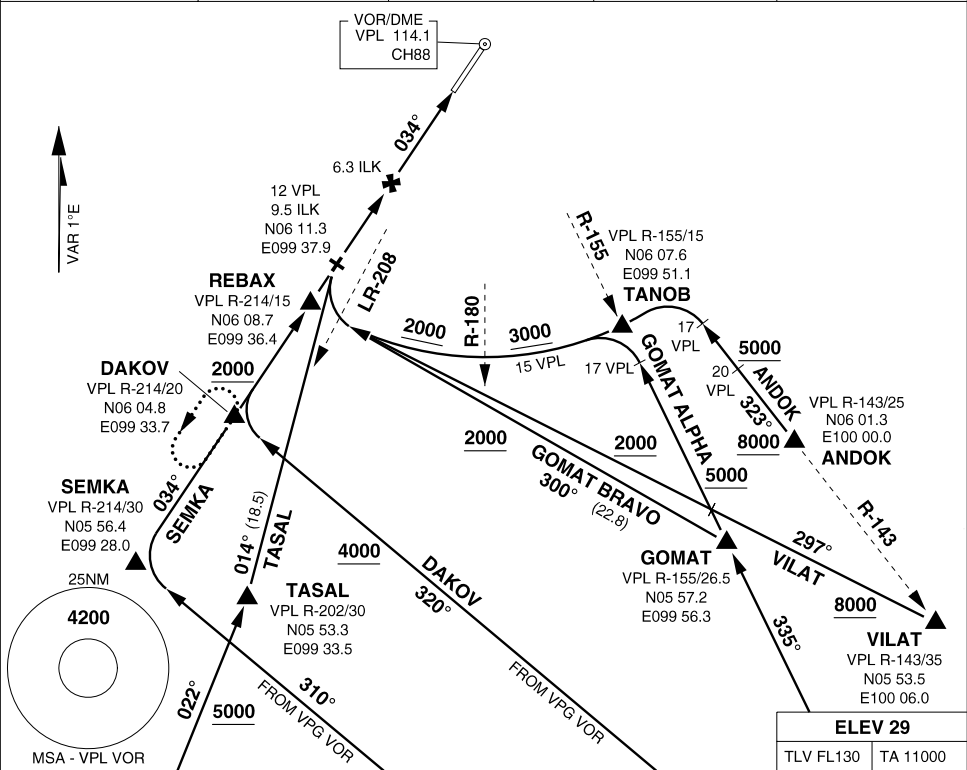
STAR
RWY 03 SOUTH

LANGKAWI (WMKL)
Langkawi INTL

AIP-03JUN10-NOTAM

MALAYSIA

ATIS 128.2	APP 119.4	TWR 118.5 281.1	SMC 121.8	ELEVATIONS IN FEET AMSL BEARINGS ARE MAGNETIC
---------------	--------------	--------------------	--------------	--------------------------------------------------



<p>ANDOK ARRIVAL</p> <ul style="list-style-type: none">FROM ANDOK TRACK 323° TO VPL VOR, NOT BELOW 8000FT.AT 20 DME VPL DESCEND TO 5000FT.AT 17 DME VPL TURN LEFT TO FLY 15 DME VPL ARC DESCEND TO 3000FT.ON CROSSING VPL R-180 DESCEND TO 2000FTON CROSSING VPL LR-208, TURN RIGHT TO INTERCEPT LOCALIZER FOR ILS APPROACH <p>DAKOV ARRIVAL</p> <ul style="list-style-type: none">FROM VPG VOR TRACK 320° TO DAKOV,DESCEND TO 4000FT.INTERCEPT VPL R-214AFTER DAKOV DESCEND TO 2000FTINTERCEPT LOCALIZER FOR ILS APPROACH <p>GOMAT ALPHA ARRIVAL</p> <ul style="list-style-type: none">FROM GOMAT TRACK 335° TO TANOB.DESCEND TO 5000FT.TURN LEFT TO FLY 15 DME VPL ARC,DESCEND TO 3000FT.ON CROSSING VPL R-180 DESCEND TO 2000FT.INTERCEPT LOCALIZER FOR ILS APPROACH.	<p>GOMAT BRAVO ARRIVAL</p> <ul style="list-style-type: none">FROM GOMAT TRACK 300° TO REBAX.DESCEND TO 2000FT.INTERCEPT LOCALIZER FOR ILS APPROACH <p>SEMKA ARRIVAL</p> <ul style="list-style-type: none">FROM VPG VOR TRACK 310° TO SEMKA.INTERCEPT VPL R-214DESCEND TO 5000FT.AFTER SEMKA DESCEND TO 2000FT.INTERCEPT LOCALIZER FOR ILS APPROACH. <p>TASAL ARRIVAL</p> <ul style="list-style-type: none">FROM MEDAN INTERCEPT VPL R-202 TO TASALDESCEND TO 5000FT.FROM TASAL TRACK 014° TO IF, DESCEND TO 2000FT.INTERCEPT LOCALIZER FOR ILS APPROACH. <p>VILAT ARRIVAL</p> <ul style="list-style-type: none">FROM VILAT TRACK 297° TO REBAX NOT BELOW 8000FT.ON CROSSING VPL R-155 DESCEND TO 2000FT.ON CROSSING VPL LR-208, TURN RIGHT TO INTERCEPT LOCALIZER FOR ILS APPROACH.
--------------------------------------------------------------------------------------------------------------------------------------------------------------------------------------------------------------------------------------------------------------------------------------------------------------------------------------------------------------------------------------------------------------------------------------------------------------------------------------------------------------------------------------------------------------------------------------------------------------------------------------------------------------------------------------------------------------------------------------------------------------------------------------------------------------------------------------------------------------------------------------------------------------------------------------------------------------	----------------------------------------------------------------------------------------------------------------------------------------------------------------------------------------------------------------------------------------------------------------------------------------------------------------------------------------------------------------------------------------------------------------------------------------------------------------------------------------------------------------------------------------------------------------------------------------------------------------------------------------------------------------------------------------------------------------------------------------------------------------------------------------------------------------------------------------------------------------------------------------------------------------------------------------------------------------------------

STAR
RWY 03 SOUTH

N06 20.00 E099 44.00

MALAYSIA

LANGKAWI (WMKL)
Langkawi INTL

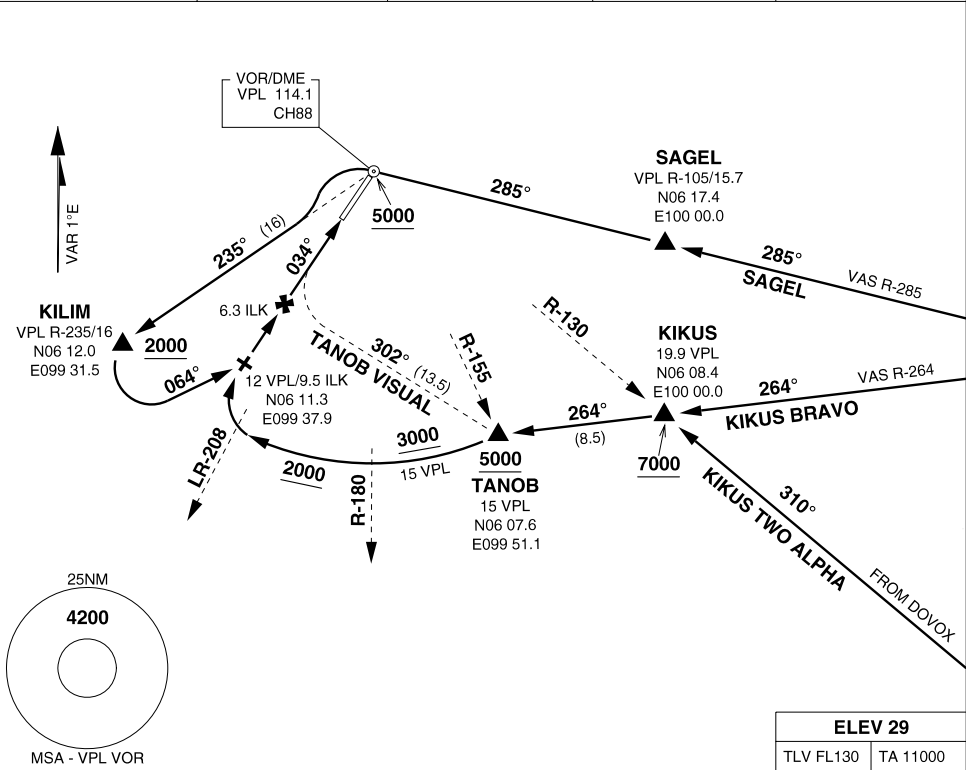
02 MAY 13

STAR
RWY 03 EAST

LANGKAWI (WMKL)
Langkawi INTL
MALAYSIA

AIP-09JUN05-NOTAM

ATIS 128.2	APP 119.4	TWR 118.5 281.1	SMC 121.8	ELEVATIONS IN FEET AMSL BEARINGS ARE MAGNETIC
---------------	--------------	--------------------	--------------	--------------------------------------------------



KIKUS TWO ALPHA ARRIVAL

- FROM DOVOX TRACK 310° TO KIKUS
- DESCEND TO 7000FT
- FROM KIKUS TRACK 264° TO TANOB.
- DESCEND TO 5000FT.
- FLY 15 DME VPL ARC DESCEND TO 3000FT.
- ON CROSSING VPL R-180 DESCEND TO 2000FT.
- ON CROSSING VPL LR-208 TURN RIGHT TO INTERCEPT LOCALIZER FOR ILS APPROACH.

KIKUS BRAVO ARRIVAL

- FROM VAS VOR TRACK VAS R-264 TO TANOB.
- DESCEND TO 5000FT.
- FLY 15 DME VPL ARC, DESCEND TO 3000FT.
- ON CROSSING VPL R-180 DESCEND TO 2000FT.
- ON CROSSING VPL LR-208 TURN RIGHT TO INTERCEPT LOCALIZER FOR ILS APPROACH.

SAGEL ARRIVAL

- FROM VAS VOR TRACK VIA R-285 TO SAGEL.
- FROM SAGEL TRACK TO VPL VOR, DESCEND TO 5000FT.
- INTERCEPT VPL R-235 TO KILIM.
- AFTER VPL VOR DESCEND TO 2000FT.
- AT KILIM TURN LEFT TRACK 064°, TO INTERCEPT LOCALIZER FOR ILS APPROACH.

TANOB VISUAL ARRIVAL

- WILL BE ISSUED BY LANGKAWI ATC WHEN PILOT REPORTS VISUAL TERRAIN REFERENCE.
- FROM TANOB TRACK 302° DIRECT TO INTERCEPT FINAL APPROACH TRACK FOR VISUAL APPROACH RUNWAY 03

STAR
RWY 03 EAST

N06 20.00 E099 44.00

MALAYSIA

LANGKAWI (WMKL)
Langkawi INTL

02 MAY 13

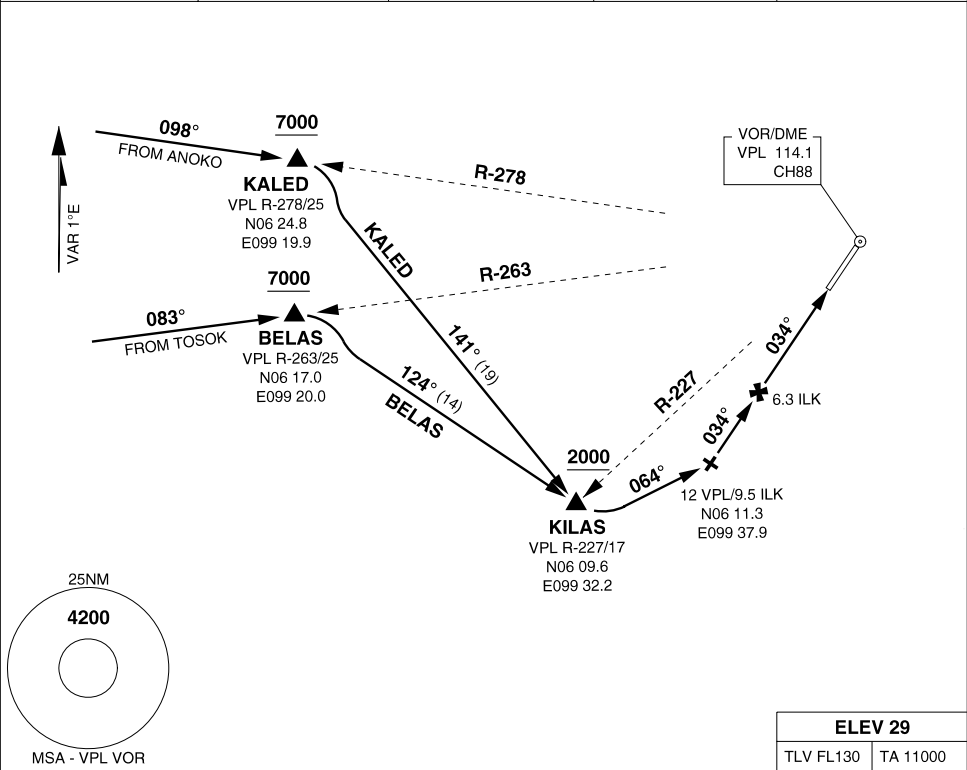
CHANGES: MSA

STAR
RWY 03 WEST

LANGKAWI (WMKL)
Langkawi INTL
MALAYSIA

AIP-04JUN095-NOTAM

ATIS 128.2	APP 119.4	TWR 118.5 281.1	SMC 121.8	ELEVATIONS IN FEET AMSL BEARINGS ARE MAGNETIC
---------------	--------------	--------------------	--------------	--------------------------------------------------



BELAS ARRIVAL

- FROM TOSOK INTERCEPT VPL R-263.
- DESCEND TO 7000FT.
- AT BELAS TRACK 124° TO KILAS.
- DESCEND TO 2000FT.
- AT KILAS TURN LEFT TRACK 064° TO INTERCEPT LOCALIZER FOR ILS APPROACH.

KALED ARRIVAL

- FROM ANOKO INTERCEPT VPL R-278.
- DESCEND TO 7000FT.
- AT KALED TRACK 141° TO KILAS.
- DESCEND TO 2000FT.
- AT KILAS TURN LEFT TRACK 064° TO INTERCEPT LOCALIZER FOR ILS APPROACH.

CHANGES: MSA

STAR
RWY 03 WEST

N06 20.00 E099 44.00

MALAYSIA

LANGKAWI (WMKL)
Langkawi INTL

02 MAY 13

Entry from STARS

LANGKAWI (WMKL)

Langkawi INTL

MALAYSIA

ATIS 128.2	APP 119.4	TWR 118.5 281.1	SMC 121.8
-----------------------------	----------------------------	----------------------------------	----------------------------

ELEVATIONS IN FEET AMSL
 BEARINGS ARE MAGNETIC

10NM

25NM

4200

MSA - VPL VOR

DETAIL OF OBSTR/SPOT ELEV
NEAR AD NOT DEPICTED ABOVE

TRACK	TIME	MNM	DME
IN		ALT	LIMIT
HOLDING AS DIRECTED BY ATC			

USE QNH

2000

034°

GP 3°/TCH 53FT

1300

MAPT LLZ

034°

740

115°

2500

CATEGORY	A	B	C	D
ILS/DME	610 589 -2400	620 599 -2500	630 609 -2500	640 619 -2600
LLZ/DME	710 689 -3300			
CIRCLING ★	760 731 -2000	760 731 -2400	NOT AUTHORISED	

NOTES: ★ 1. CAT A/B CIRCLING PERMITTED WEST OF RWY 03/21 WITHIN 2.7NM. LEFT CIRCUIT ONLY. CAT C/D NOT AUTHORISED
 † 2. MAX IAS: MISSED APCH TURNS: 175KT
 3. RQ STA VIS INCREASED BY 900M WHEN HIAL NOT AVBL.

CHANGES: MSA

Entry from STARS

PANS-OPS 86

02 MAY 13

MALAYSIA

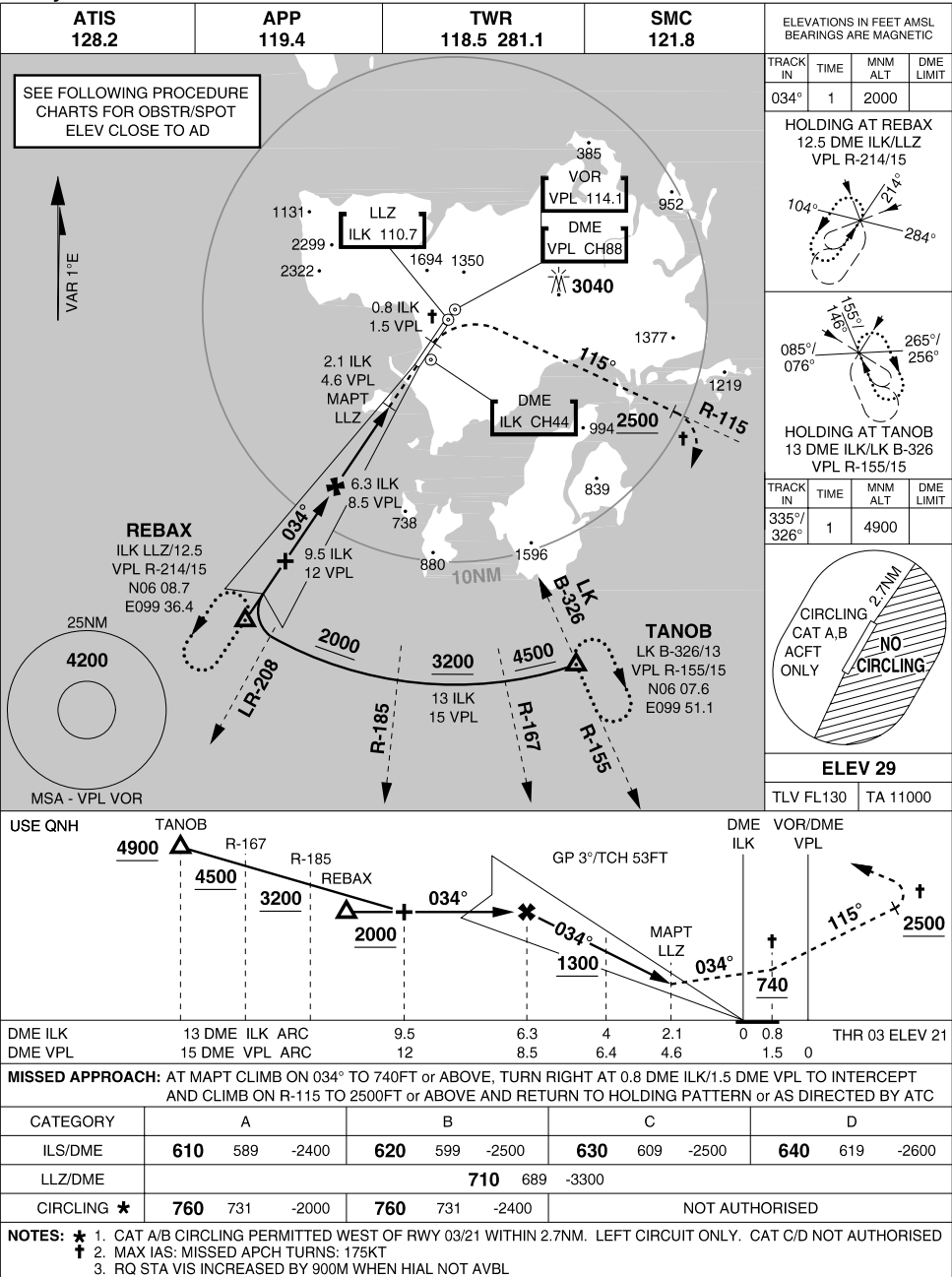
LANGKAWI (WMKL)

Langkawi INTL

ILS RWY 03
Entry from TANOB or REBAX

LANGKAWI (WMKL)
Langkawi INTL

AIP-04JUN095-NOTAM MALAYSIA



CHANGES: MSA

ILS RWY 03
Entry from TANOB or REBAX

N06 20.00 E099 44.00
PANS-OPS 86
02 MAY 13

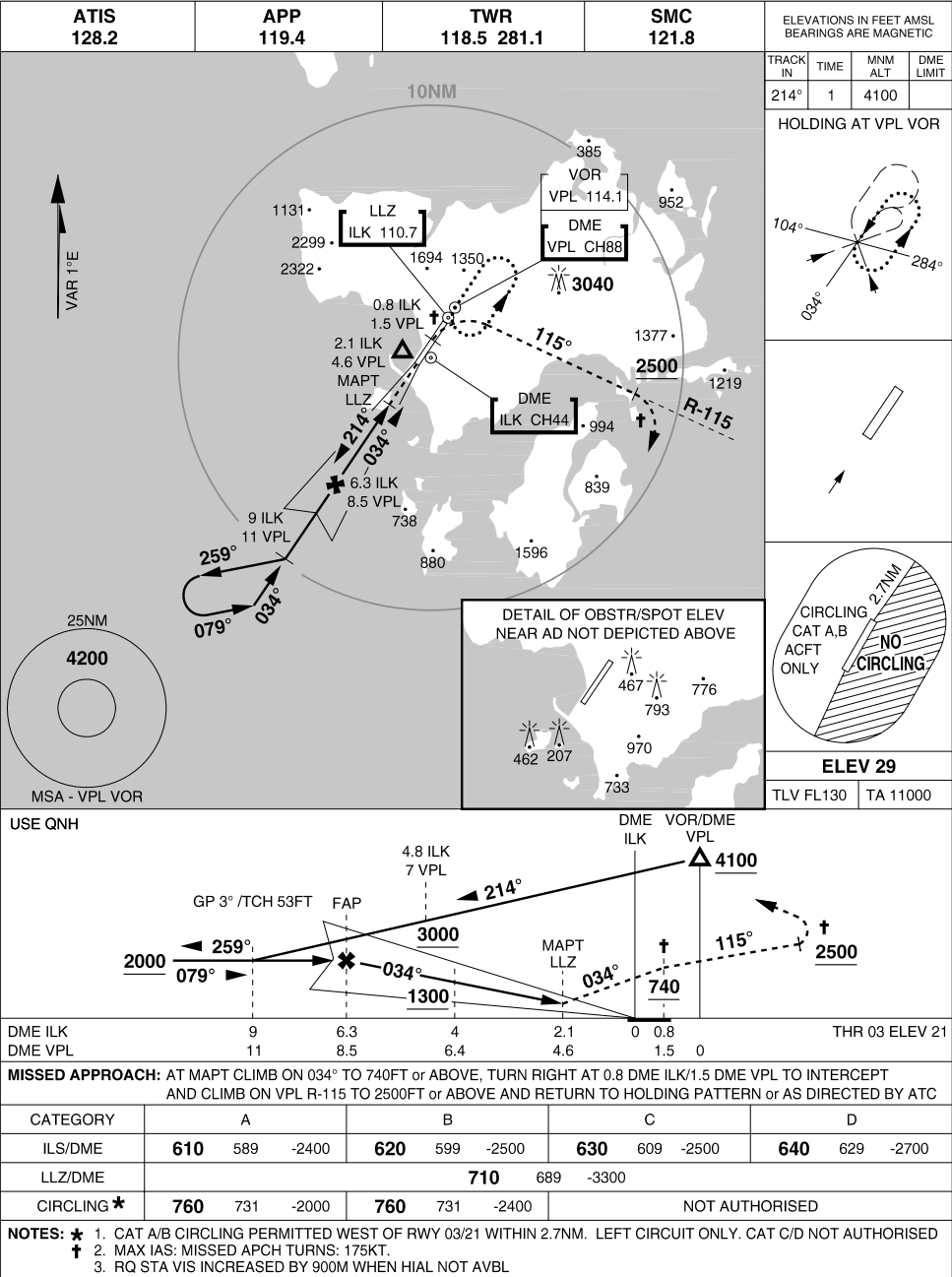
LANGKAWI (WMKL)
Langkawi INTL

MALAYSIA

ILS/DME RWY 03
Entry from VPL

LANGKAWI (WMKL)
Langkawi INTL
MALAYSIA

AIP-04JUN095-NOTAM



CHANGES: MSA

ILS/DME RWY 03
Entry from VPL

N06 20.00 E099 44.00
PANS-OPS 86
02 MAY 13

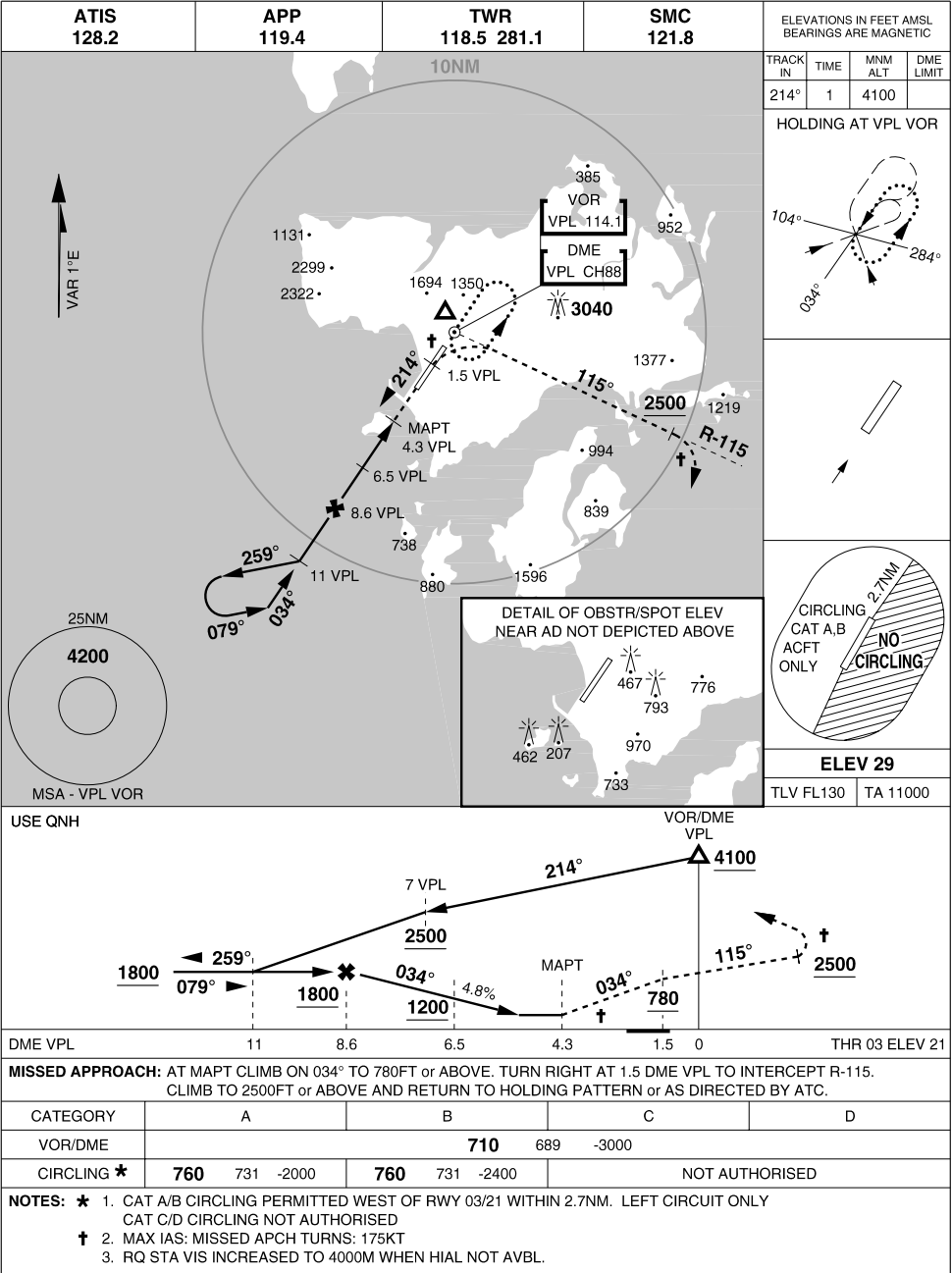
LANGKAWI (WMKL)
Langkawi INTL
MALAYSIA

VOR/DME VPL
RWY 03

LANGKAWI (WMKL)
Langkawi INTL

MALAYSIA

AIP-04JUN095-NOTAM



CHANGES: MSA

VOR/DME VPL
RWY 03

N06 20.00 E099 44.00
PANS-OPS 86
02 MAY 13

LANGKAWI (WMKL)
Langkawi INTL

MALAYSIA